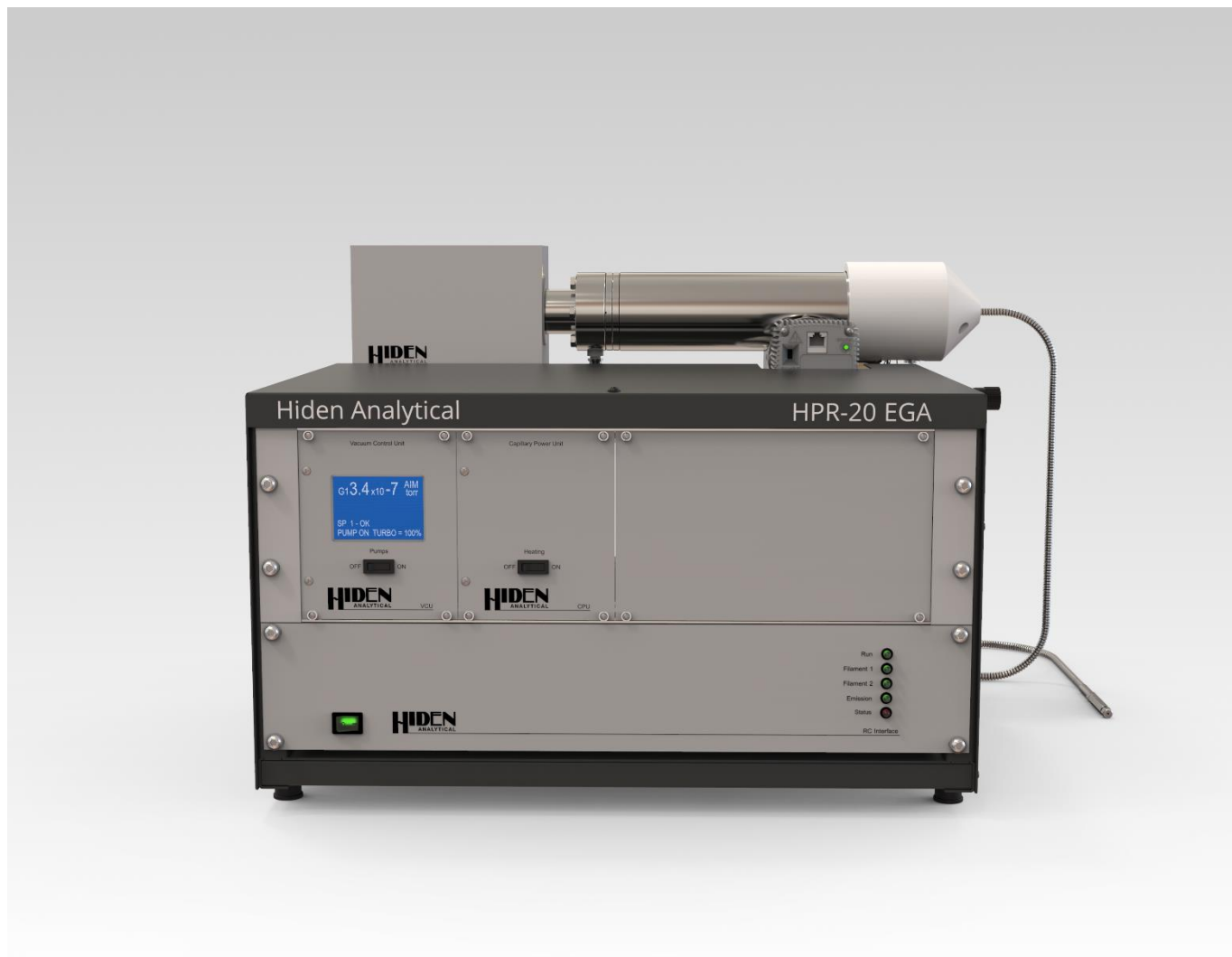


HideN HPR-20 EGA

for evolved gas analysis in TGA-MS



Introduction

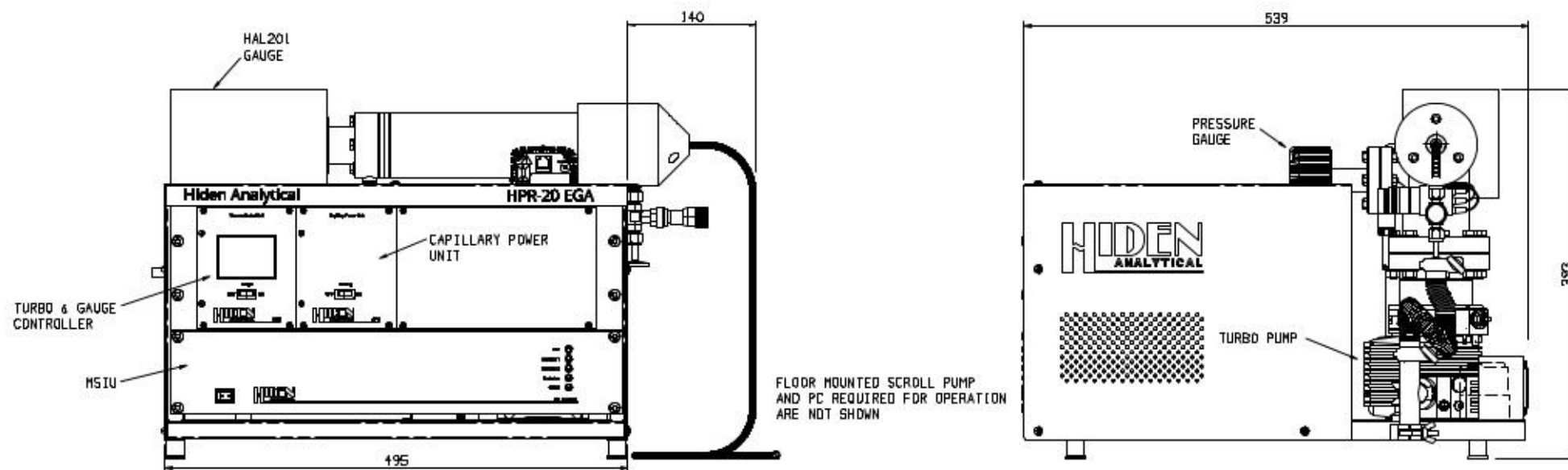
The Hiden HPR-20 EGA is configured for continuous analysis of **gases and vapours** from **thermogravimetric analysers (TGA)**.

Operating to 200°C, the QIC (quartz inert capillary) flexible 2 m capillary inlet provides fast response times of less than 300 ms.

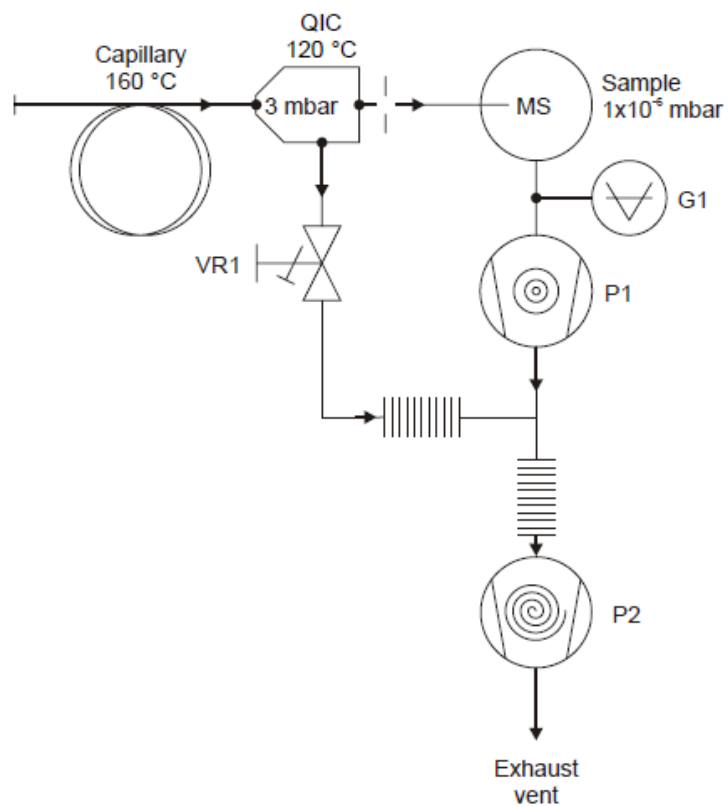
The HPR-20 EGA system has a mass range of 200 amu (300, 510 amu options) and a detection capability from **100% to less than 100 ppb**.

The external scroll pump provides enhanced pumping for light gases.

HPR-20 EGA System Schematic

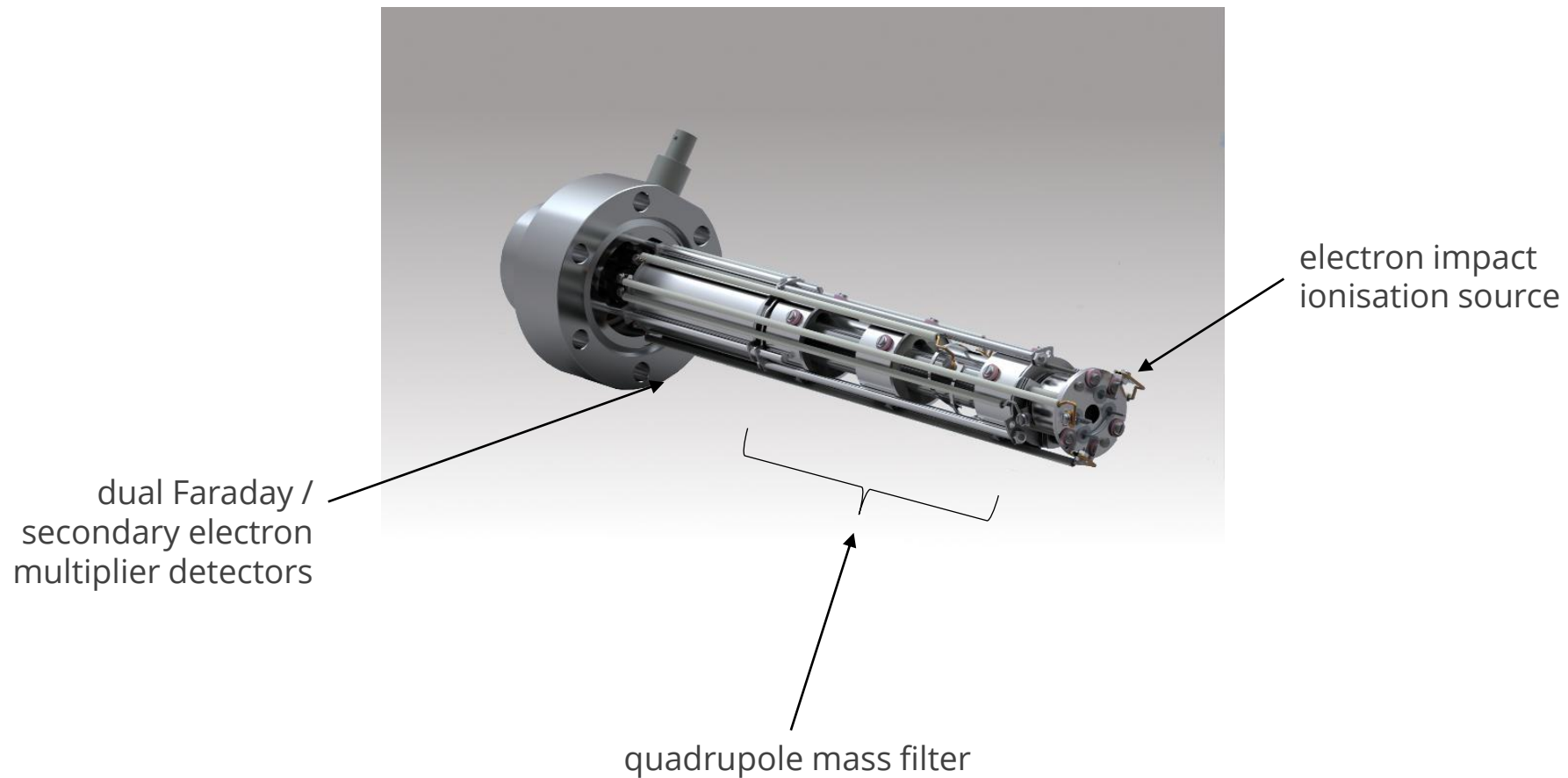


HPR-20 EGA Vacuum Schematic

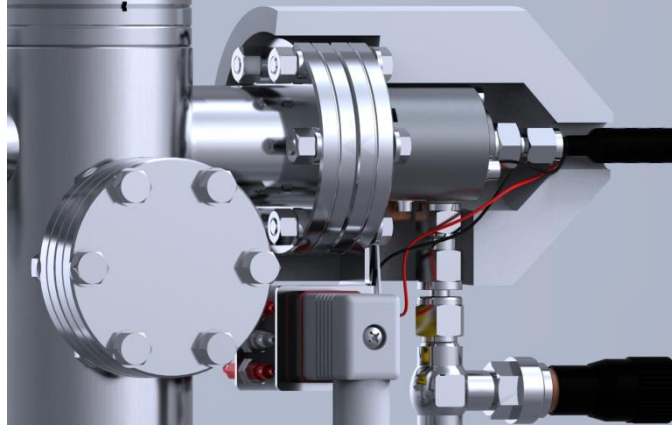
**Key**

- G1 Total pressure gauge
- VR1 QIC Inlet bypass control valve
- P1 60 l/s turbo drag pump
- P2 Scroll pump
- MS Mass spectrometer vacuum chamber

HPR-20 EGA Mass Spectrometer

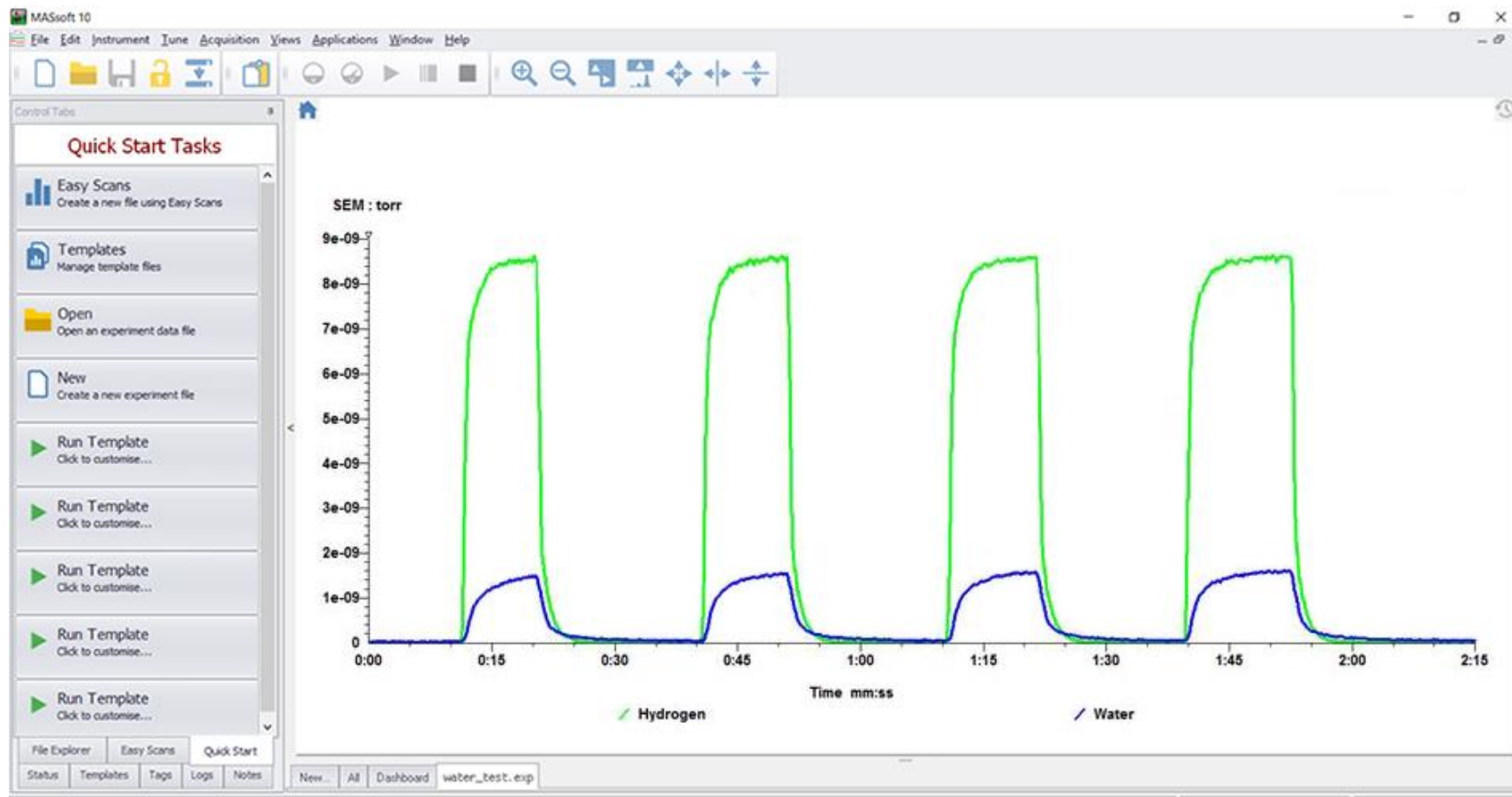


QIC Inlet Technology



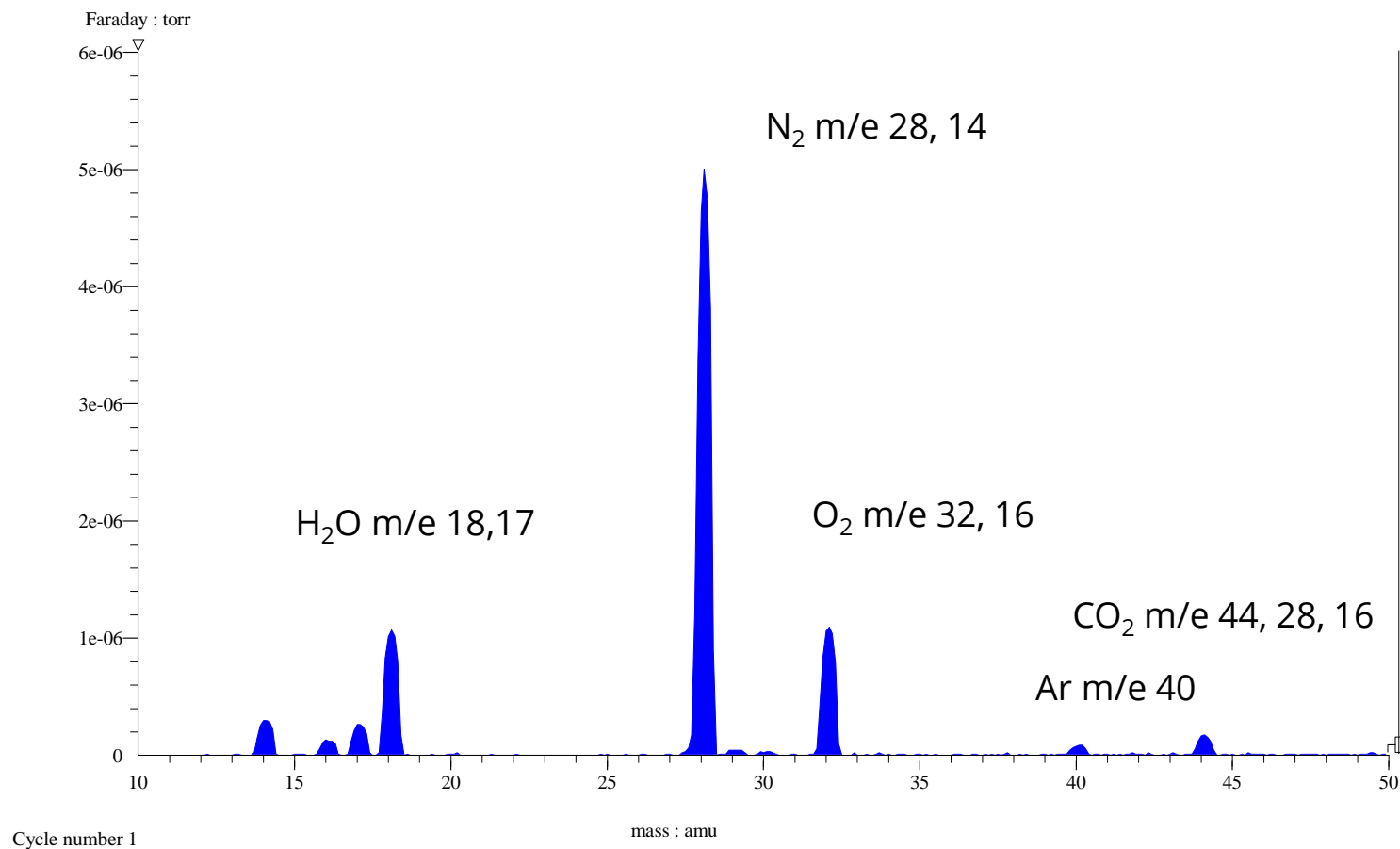
- | | | |
|--------------------------------------|---|--------------------------------|
| Quartz and Platinum Wetted Surfaces | → | No memory effects |
| Heated Capillary | → | No condensation effects |
| Flow Matched | → | Optimum response / recovery |
| Minimal Internal Volume | → | PPB detection |
| Interchangeable Sampling Capillaries | → | Analysis from 10 mbar to 2 Bar |

Fast Response to Permanent Gases / Vapours



Data shows the response of a HPR-20 system to gas and vapour during switching between a dry He stream and a wet H₂ and Ar flow. For clarity, only the H₂ and H₂O data is shown in the graph.

Typical Mass Spectrum of Air



Note: Different species can have the same mass e.g. CO, N₂ m/e 28

Soft Ionisation

Unique to Hiden gas analysis systems, soft ionisation allows users to selectively ionise different gases by setting the ionisation energy for a particular mass.

This powerful technique can simplify the analysis of otherwise complex cracking patterns from multi-component gas/vapour mixtures.

The ionisation energy can be altered from 4 to 150 eV, in 0.1 eV increments. Standard operation is at 70 eV.

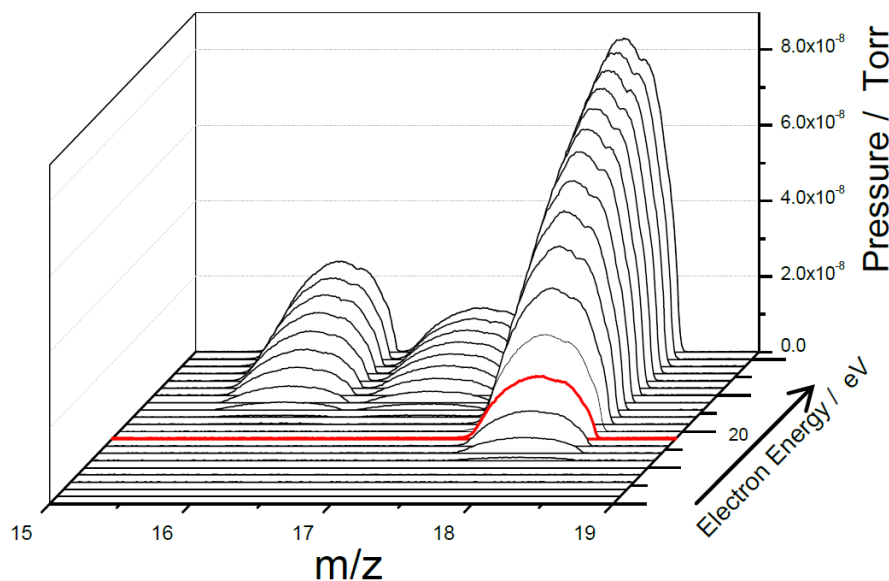


Figure 1 A: m/z vs Electron energy-H₂O/Air

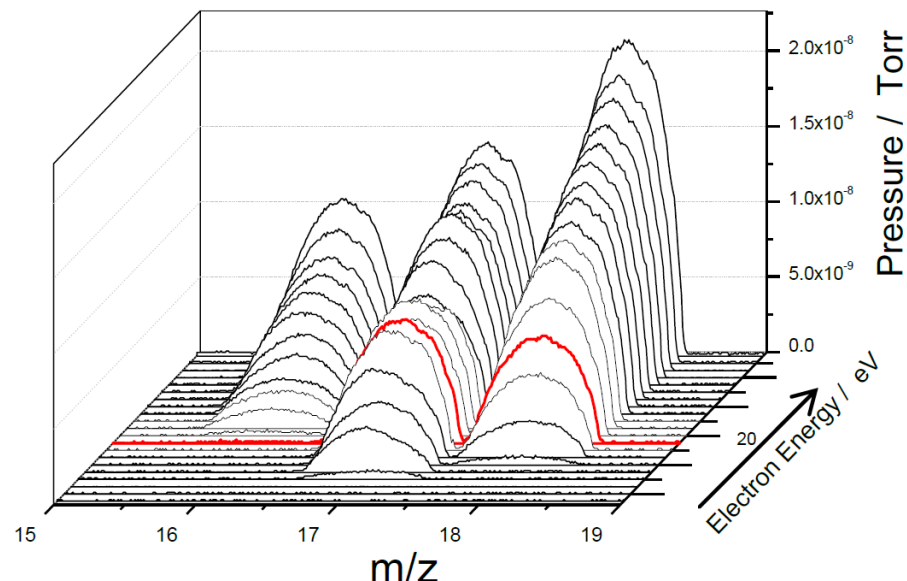
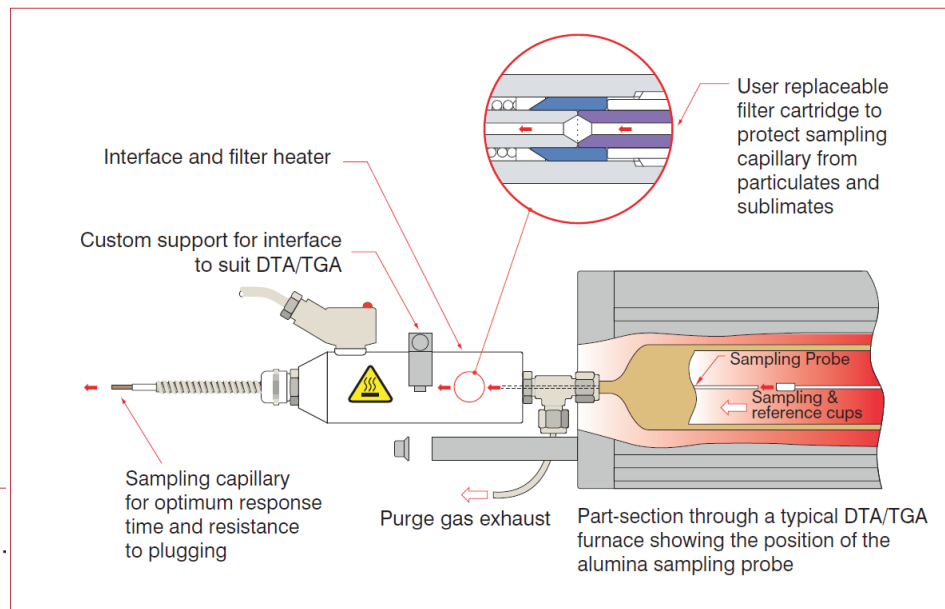


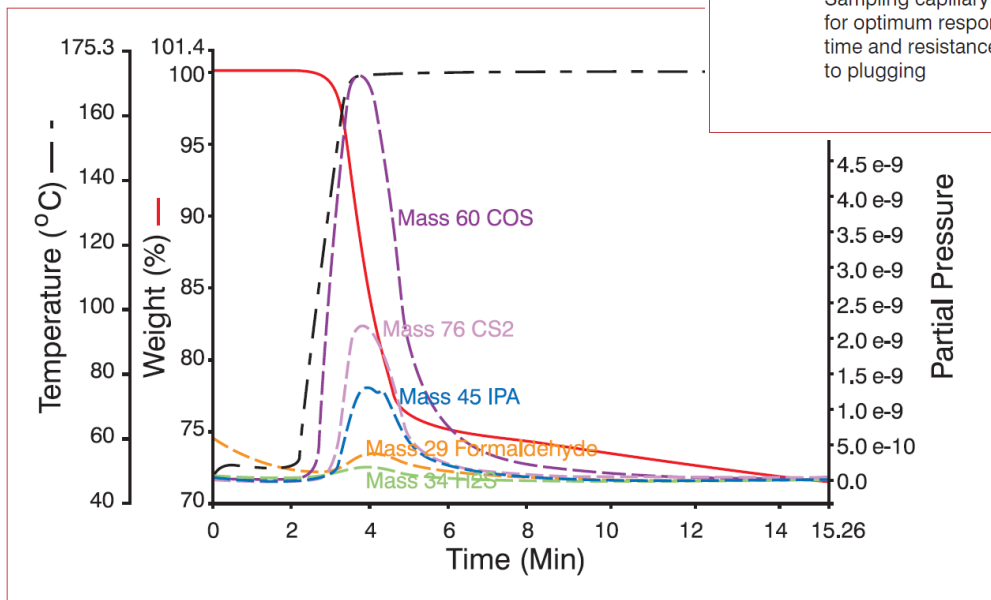
Figure 1 B: m/z vs Electron energy-NH₃/ H₂O/Air mix

Thermal Analysis Mass Spectrometry

Fast response, low dead volume custom engineered interfaces for most TGA/STA systems.



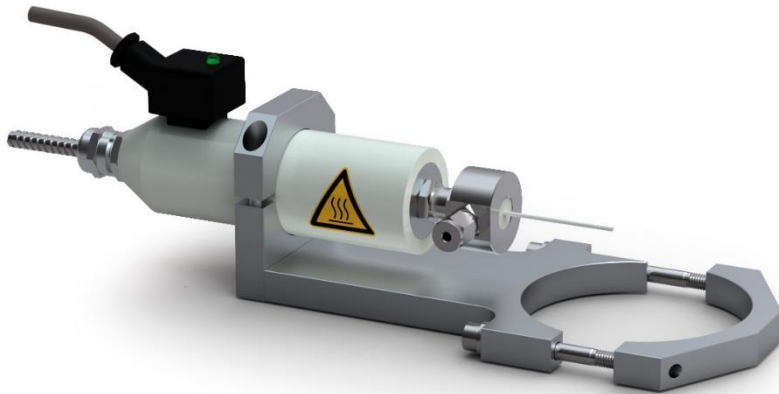
Typical TGA Inlet



TGA-MS data

TGA-MS

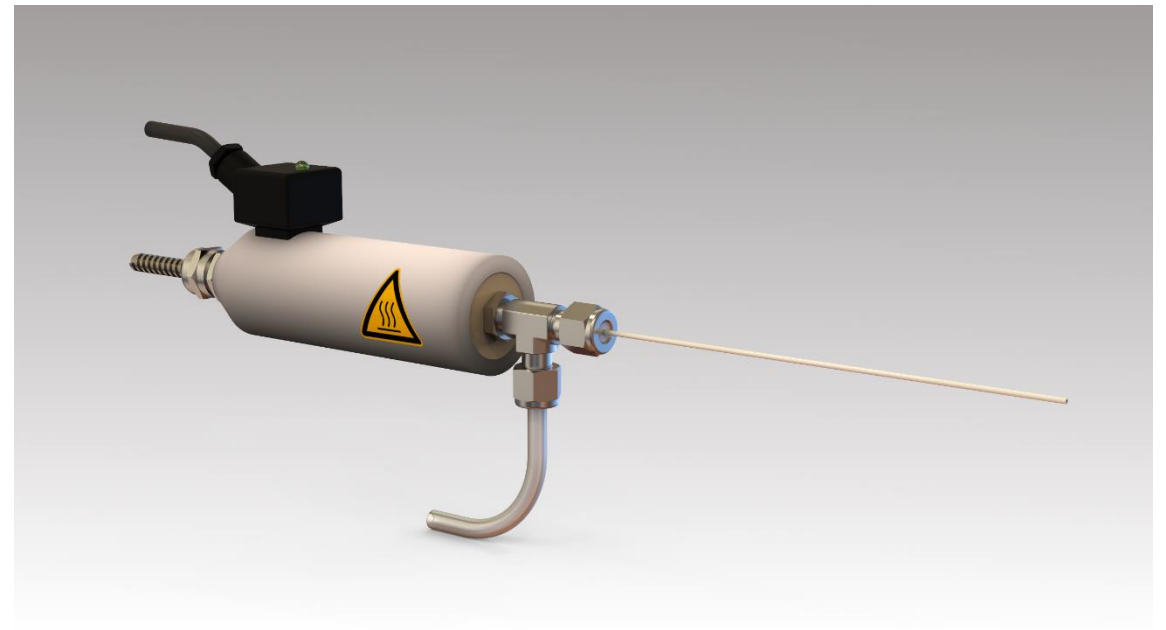
MS Inlets for Coupling to TGA Systems



Features:

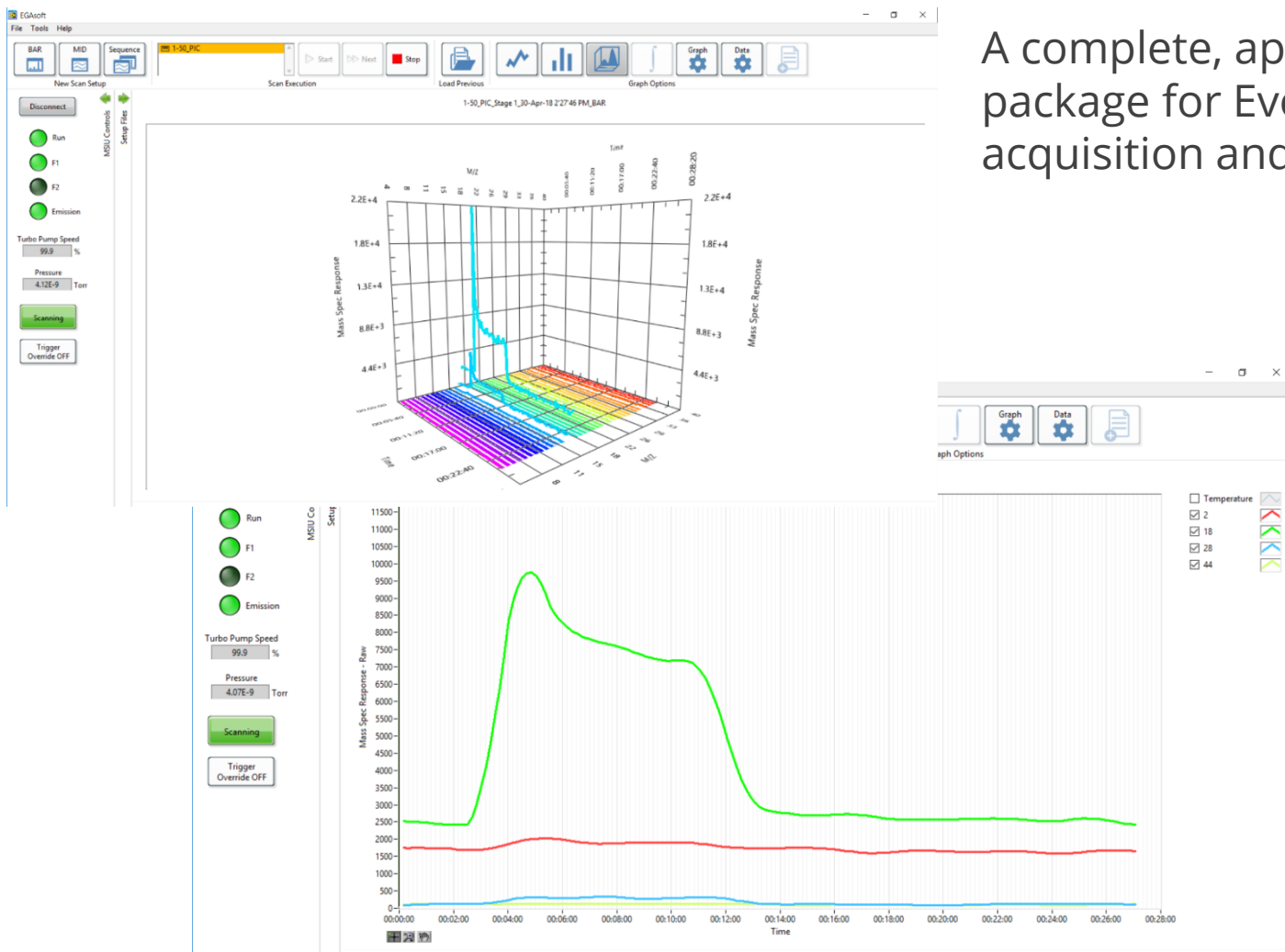
- Minimum dead volume
- Controllably heated sample inlet – no cold spots
- Inert materials

A wide range of custom engineered interfaces are available to suit most TGA instruments.



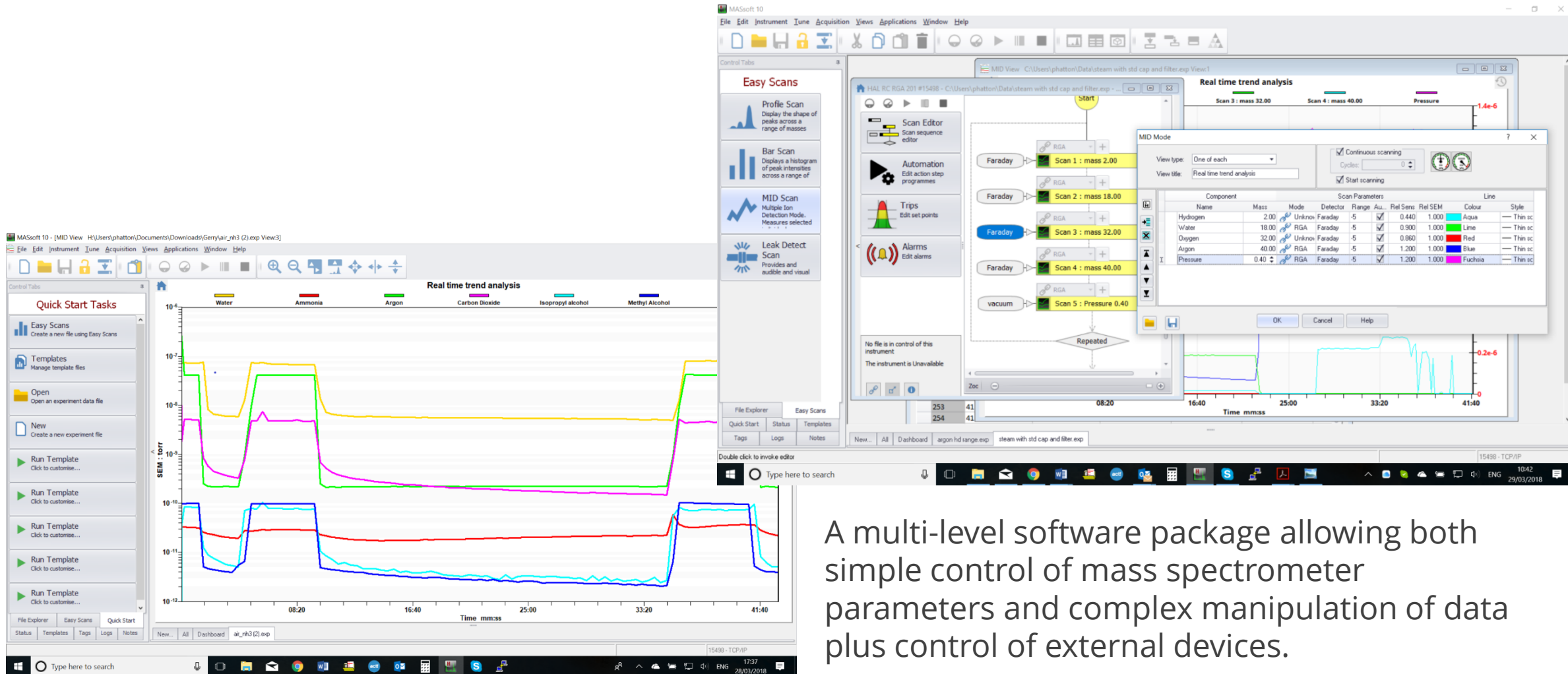
EGAsoft Software for Evolved Gas Analysis

A complete, application specific, software package for Evolved Gas Analysis data acquisition and analysis.



- 3D bar scan view for easy determination of trends in bar data
- Simple automatic export in formats specific for import to any TGA/STA manufacturer
- Automatic spectral deconvolution in MID mode
- Automatic start/stop facility
- Auto-sequencing of MS data acquisition files e.g. for use with auto samplers
- Peak integration and data analysis routines

MASsoft Professional control software



A multi-level software package allowing both simple control of mass spectrometer parameters and complex manipulation of data plus control of external devices.

Hiden HPR-20 Users



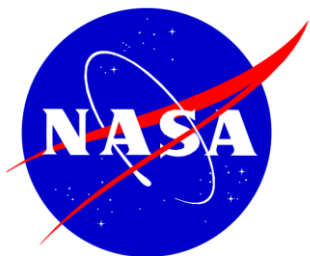
THE UNIVERSITY
OF QUEENSLAND
AUSTRALIA



SUZUKI



Imperial College
London



ETH

Eidgenössische Technische Hochschule Zürich
Swiss Federal Institute of Technology Zurich



NASA
Dow Chemical
Exxon-Mobil
Imperial College
MIT
University of British Columbia
University of Queensland
BASF
Seoul National University
Suzuki
University of Cambridge
Beijing Institute of Technology
Samsung
ETH Zürich
KAUST
Durham University
Siemens
Shell



Massachusetts
Institute of
Technology



SIEMENS



Summary

- Bench-top quadrupole mass spectrometer gas analysis system configured for continuous analysis of gases and vapours from thermogravimetric analysers (TGA).
- Real-time, multi-species analysis – 100 PPB to 100%
- Fast response to permanent gases and vapours – less than 300 ms response time
- Soft ionisation for reduced spectral fragmentation and simplified data interpretation



- 
- A photograph of a modern, two-story office building with a grey facade and large glass windows. The building has a prominent entrance on the left side. A large, semi-transparent white circle is overlaid on the left side of the image, containing a bulleted list. The sky is clear blue, and there are some trees and bushes in the foreground.
- www.HidenAnalytical.com
 - The Hiden website is an excellent resource with product pages, brochures, catalogues, product pages with some application notes, presentation and other information.
 - Contact +44 1925 445225 for direct support.